



**Policy Research Center for
Tobacco and the Environment**



COMMUNITY PARTNERS WORKSHOP

February 21, 2024

1:00-2:30 pm

SDSU | San Diego State
University



cte | Center for Tobacco
and the Environment



AGENDA

Icebreaker Activity

JD Noriega

Meet & Greet: Partnership Building!

M Baum

Tobacco Fact, or Fiction?

JD Noriega

Role of Community Partners

M Baum

Next Steps

???



Policy Research Center for
Tobacco and the Environment



GETTING TO KNOW YOU

ICE BREAKER

If you were a superhero, what would be your superpower and/or kryptonite?

Meet and Greet

Partnership Building Opportunity!

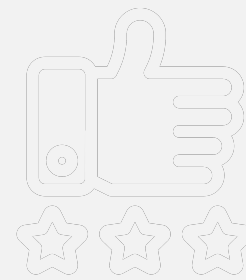
1. Introduce yourself
2. What organization are you with?
3. Why did you say yes?



Fact or Fiction?

How to play Kahoot

1. Go to Kahoot.it using your phone or computer.
2. Type in the pin (JD will give)
3. Have fun! Winner gets a \$25 Amazon gift card.

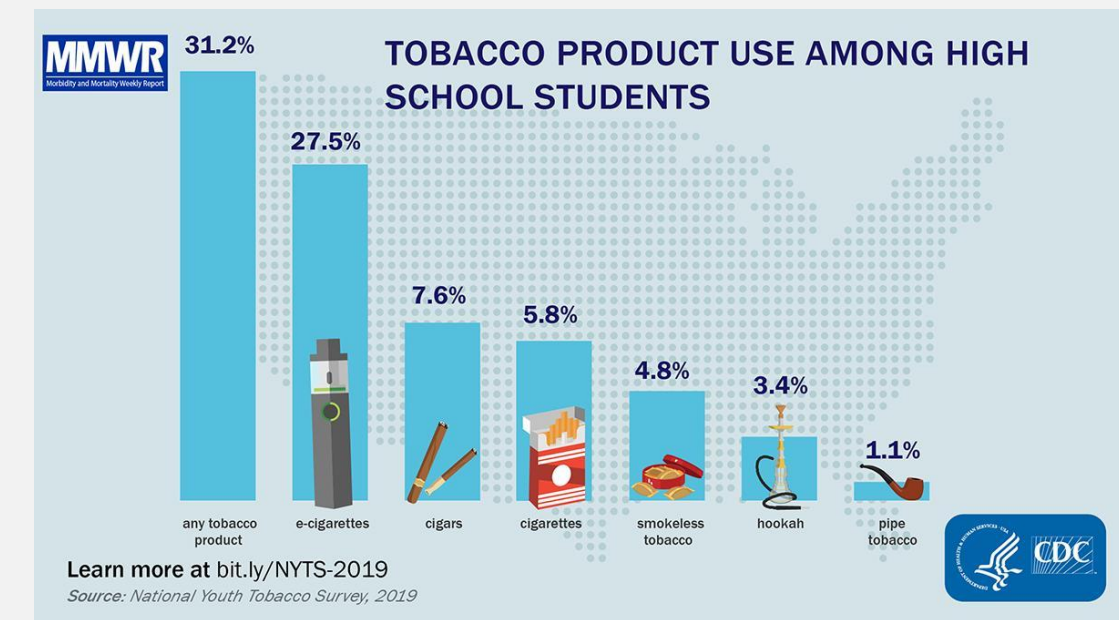


Role of Community Partners

A conversation with Mary Baum



1. What are rapid response projects?
2. How will you contribute
3. How can we help you?



Next Steps





Thank you!

tobacco.center@SDSU.edu
9245 Sky Park Ct, Suite 110
San Diego, CA 92123

*The Tobacco Policy Research Center for Tobacco and the Environment is supported by funds from the California Tobacco-Related Disease Research Program.
TRDRP Grant # T33PC6863.*