



# Campers Support Restricting Commercial Tobacco Use in the La Jolla Campground



## Survey of Campers and Day Users

Visitors to the campground website were invited to participate in an online survey about their perspective on the use of commercial tobacco, which was distinguished from traditional tobacco. 173 participated.

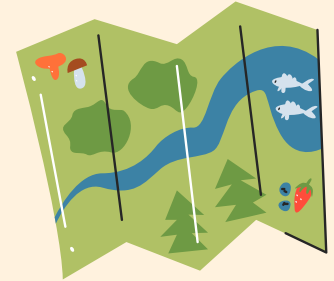
**Traditional Tobacco** - also known as sacred tobacco, is tobacco used by Tribal communities for ceremonial purposes.

### Who are the campers that participated in the survey?

69% planned to bring children. 4% currently smoke cigarettes.

62% were Hispanic or Latino/a. 3% were Native American

57% were aged 25-39. and/or Alaska Native.



When asked what the policy on the smoking of commercial tobacco products should be,

**83%** of campers agreed that smoking should be banned or restricted.

## Campers care about the impact of tobacco product waste on the environment.

**75%**

of campers support policies prohibiting the use of commercial tobacco products in areas they frequently visit to help prevent cigarette butts and other commercial tobacco waste from accumulating.

**83%** agree commercial tobacco product waste contains dangerous chemicals.

**78%** worry about the environmental impact of commercial tobacco product waste.

**62%** tend to keep themselves, their children, and/or pets away from places with a lot of tobacco product waste.

**Only 6%**

of campers say they would stop camping if smoking and vaping were banned.

**Less than 8%**

of campers say they would use smokeless products if smoking and vaping were banned.



*Published September 2025. Funded by the Tobacco-Related Disease Research Program #T33PC6863.*